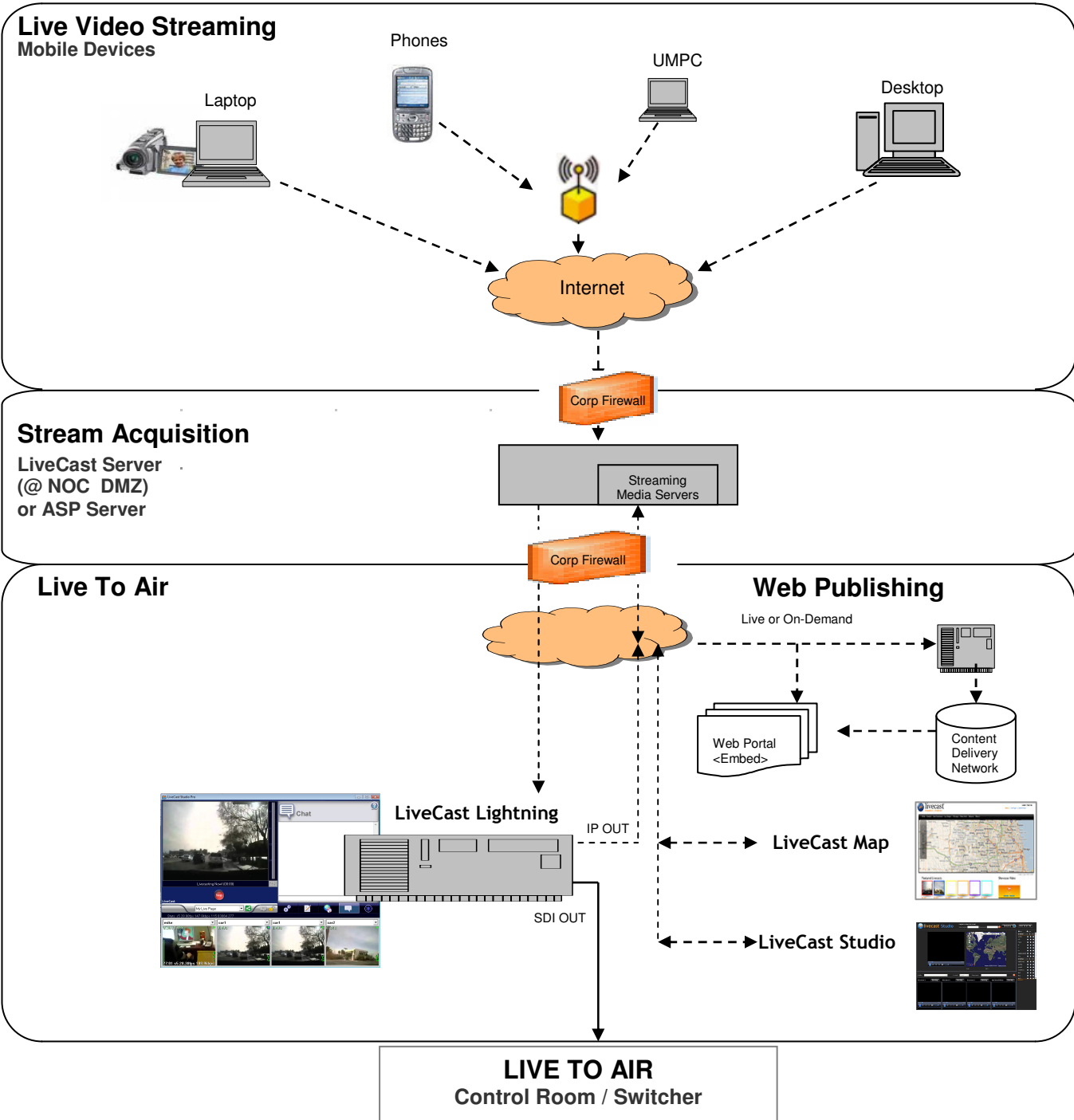


LIVECAST LIGHTNING WORKFLOW & HARDWARE



Average one (1) second from device to SDI payout

## Overview:

**LiveCast Lightning** is LiveCast's low latency broadcast playout system. This turnkey solution is available for both ASP and secured server licensed accounts.

### Features:

- ▶ Up to 16 incoming video streams can be monitored concurrently.
- ▶ Average one second latency from device to playout.
- ▶ Instant switching of video streams, regardless of the source bit rate, codec, or resolution.
- ▶ SDI output, up to HD quality.
- ▶ Stream cascading allows near real-time networking of streams between remote stations.
- ▶ Accurate real-time display of all individual feed statistics: GPS status, audio levels, latency from device, frames per second, transmitting bit rate, length of transmission.
- ▶ Send switched feed to online account any time during operation for web publishing.
- ▶ Auto-archiving and auto-posting of video files to online accounts, blogging services, Twitter accounts and more.
- ▶ Over 500 devices supported (by far the most phones and types of devices in the industry).
- ▶ Highest quality video delivery from mobile devices.
- ▶ Support for Windows Media, QuickTime, Silverlight and Flash.
- ▶ Share feature allows live remote viewing from phones, PC, Mac, and Linux.

For a full list of compatible mobile devices, please visit: <http://www.livecast.com/supported-devices.html>

## General FAQs

*Q: How much latency is there when streaming live from the handset to our control room?*

A: LiveCast Lightning delivers video from remote devices in .5 to 1.5 seconds.

*Q: How many concurrent streams can the Lightning System handle?*

A: LiveCast Lightning can handle up to 16 concurrent streams with a high level of stability. For 16 concurrent high bit rate streams, you will need a LiveCast secured server. The weakest link will be the bandwidth limitations of your broadband provider. If your connection can sustain 4 Mbit connectivity, LiveCast Lightning will enable extremely high quality performance.

*Q: We want to also have our IT dept. deploy the streams to our web properties. Can you do this?*

A: Yes. LiveCast Lightning has been designed to simultaneously deliver live content to both On-Air and Online departments. If your web audience is large, we suggest an integrated and automated workflow, where the system is preconfigured to automatically pull all live and archived videos to your content delivery network (i.e. Akami, Limelight).

*Q: If an incoming stream is something of national or international interest, and our affiliates want to broadcast it, how would the video be distributed to those affiliates?*

A: LiveCast Lightning has a unique cascading streaming technology that allows for networking of the streams between various stations. The affiliate must install a LiveCast Lightning system, and then could tap into other affiliates feeds and mix them in any manner and publish to unique web properties.

*Q: Can we use LiveCast Lightning for field reporters?*

A: Yes. LiveCast is developing a field version of Lightning that allows the field reporter to monitor a news anchor with the same 1 second latency using only a laptop and cellular air card. As long as there is connectivity, the field reporter will be able to monitor and interact with the news anchor with typically 1 second or less latency.

*Q: What is the pricing of hardware and licenses?*

A: For system and license pricing, please contact a LiveCast sales representative at [sales@livecast.com](mailto:sales@livecast.com).